

# QSS

**QUICK SELECT SYSTEM**

# **QSS**

**QUICK SELECT SYSTEM**

## **The QSS Modular System and what it means for you**

***With the modular Britannia system, specifying a low velocity high performance canopy for the most demanding installation just got a whole lot easier and faster!***

All projects are time critical, and all projects demand maximum performance at minimal cost. And all stakeholders want to ensure conformance with current and proposed regulations.

*Introducing **QSS**, the Quick Select System to answer those needs that industry demands but up until now have been hard to find.*

***And the process is this simple:***

- 1. Select the performance level** *(Capturestream, Britstream Extract only or DishWash)*
- 2. Select the best size** *(choose from the easy-to-use Size Chart)*
- 3. Order your canopy** *(and receive drawings immediately)*
- 4. Your canopy will be ready ex-factory in three weeks from date of order\***
- 5. Enjoy the time and \$\$ savings!**

*A summary of the Britannia models and sizes now available under the **QSS** System are on the following pages with reference charts to make selection and ordering fast and easy.*

***No delays waiting for approval drawings, no lengthy manufacturing times, no guesswork.***

***Welcome to QSS – specifying the right canopy at the right price just got a whole lot easier!***

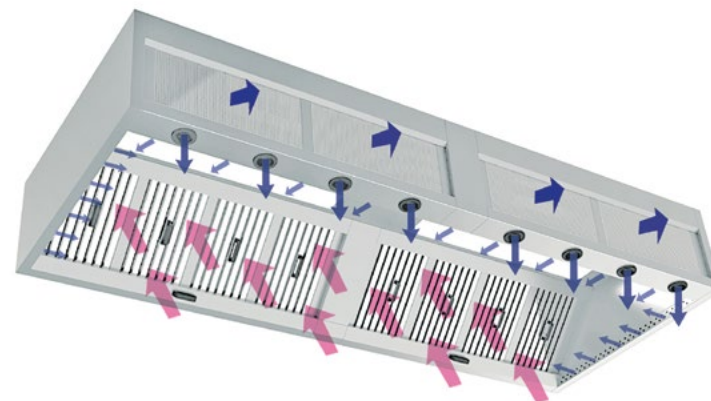
## Britannia performance canopies:

### Capturestream CS3 with Induction technology

Offering total control over make-up air by providing a 'Capturestream' of air across the front and both sides of the canopy, plus diffused air to the front and spot cooling for the ultimate in performance.

Fitted with Superstream world-class baffle filter technology to lower exhaust air rates and improve particulate capture.

Capturestream models with induction supply across the canopy suit those installations where ultimate performance is paramount.



### Britstream Extract Only (BE)

For superior performance through intelligent world-class Superstream baffle filter technology that contributes to lower exhaust air rates and improve particulate capture.

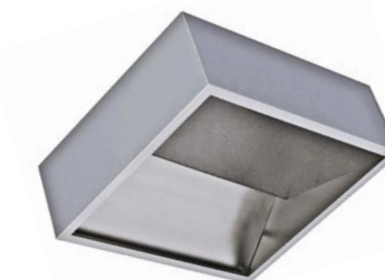
Extract only models suit those installations where high performance and economy is the requirement.



### Britstream DishWash (DWE)

High performance through well proven world-class design.

Condensate models are manufactured to the latest standards for trouble free installation.





Simply choose the best size canopy from the charts below - wall canopies are 1650mm deep, (Island 3300mm deep) x 490 high . All canopies supplied with skirt up to a total of 750mm high if required.

**Capturestream CS3 - extract with supply air, spot cooling and Capturestream Induction**

SINGLE SIDED/ WALL TYPE - ALL 1650 WIDE								
Model number	Length	No. Filters	* Max Extract Volume L/s	No. of Extract Spigots	* Max Supply Volume L/s	No. of Supply Spigots	No. of Lights	No. of Zones
CS3-12001650	1200	3	660	1	560	1	1	1
CS3-13751650	1375	3	800	1	560	1	1	1
CS3-15501650	1550	4	880	1	750	1	1	1
CS3-17251650	1725	4	880	1	750	1	1	1
CS3-19001650	1900	5	1100	1	935	1	1	1
CS3-20751650	2075	5	1100	1	935	1	1	1
CS3-22501650	2250	6	1320	1	1120	1	1	1
CS3-24251650	2425	6	1320	1	1120	1	1	1
CS3-26001650	2600	7	1540	2	1310	2	2	2
CS3-27751650	2775	7	1540	2	1310	2	2	2
CS3-30001650	3000	8	1760	2	1495	2	2	2
CS3-31751650	3175	8	1760	2	1495	2	2	2
CS3-33501650	3350	9	1980	2	1685	2	2	2
CS3-35251650	3525	9	1980	2	1685	2	2	2
CS3-37001650	3700	10	2200	2	1870	2	2	2
CS3-38751650	3875	10	2200	2	1870	2	2	2
CS3-40501650	4050	11	2420	2	2055	2	2	2
CS3-42251650	4225	11	2420	2	2055	2	2	2
CS3-44001650	4400	12	2640	2	2245	2	2	2
CS3-45751650	4575	12	2640	2	2245	2	2	2
CS3-48001650	4800	13	2860	3	2430	3	3	3
CS3-49751650	4975	13	2860	3	2430	3	3	3
CS3-51501650	5150	14	3080	3	2620	3	3	3
CS3-53251650	5325	14	3080	3	2620	3	3	3
CS3-55001650	5500	15	3300	3	2805	3	3	3
CS3-56751650	5675	15	3300	3	2805	3	3	3
CS3-58501650	5850	16	3520	3	2990	3	3	3
CS3-60251650	6025	16	3520	3	2990	3	3	3
CS3-62001650	6200	17	3740	3	3180	3	3	3
CS3-63751650	6375	17	3740	3	3180	3	3	3
CS3-65501650	6550	18	3960	3	3365	3	3	3
CS3-67251650	6725	18	3960	3	3365	3	3	3

DOUBLE SIDED / ISLAND TYPE - ALL 3300 WIDE								
Model number	Length	No. Filters	* Max Extract Volume L/s	No. of Extract Spigots	* Max Supply Volume L/s	No. of Supply Spigots	No. of Lights	No. of Zones
CS3I-12003300	1200	6	1320	2	1120	2	2	2
CS3I-13753300	1375	6	1320	2	1120	2	2	2
CS3I-15503300	1550	8	1760	2	1500	2	2	2
CS3I-17253300	1725	8	1760	2	1500	2	2	2
CS3I-19003300	1900	10	2200	2	1870	2	2	2
CS3I-20753300	2075	10	2200	2	1870	2	2	2
CS3I-22503300	2250	12	2640	2	2240	2	2	2
CS3I-24253300	2425	12	2640	2	2240	2	2	2
CS3I-26003300	2600	14	3080	4	2620	4	4	4
CS3I-27753300	2775	14	3080	4	2620	4	4	4
CS3I-30003300	3000	16	3520	4	2990	4	4	4
CS3I-31753300	3175	16	3520	4	2990	4	4	4
CS3I-33503300	3350	18	3960	4	3370	4	4	4
CS3I-35253300	3525	18	3960	4	3370	4	4	4
CS3I-37003300	3700	20	4400	4	3740	4	4	4
CS3I-38753300	3875	20	4400	4	3740	4	4	4
CS3I-40503300	4050	22	4840	4	4110	4	4	4
CS3I-42253300	4225	22	4840	4	4110	4	4	4
CS3I-44003300	4400	24	5280	4	4490	4	4	4
CS3I-45753300	4575	24	5280	4	4490	4	4	4
CS3I-48003300	4800	26	5720	6	4860	6	6	6
CS3I-49753300	4975	26	5720	6	4860	6	6	6
CS3I-51503300	5150	28	6160	6	5240	6	6	6
CS3I-53253300	5325	28	6160	6	5240	6	6	6
CS3I-55003300	5500	30	6600	6	5610	6	6	6
CS3I-56753300	5675	30	6600	6	5610	6	6	6
CS3I-58503300	5850	32	7040	6	5980	6	6	6
CS3I-60253300	6025	32	7040	6	5980	6	6	6
CS3I-62003300	6200	34	7480	6	6360	6	6	6
CS3I-63753300	6375	34	7480	6	6360	6	6	6
CS3I-65503300	6550	36	7920	6	6730	6	6	6
CS3I-67253300	6725	36	7920	6	6730	6	6	6

\*Note: This is the Maximum Extract Volume L/s quoted for each canopy size, specific air flow data will be supplied on request.



Simply choose the best size canopy from the charts below - wall canopies are 1650mm deep, (Island 3300mm deep) x 490 high . All canopies supplied with skirt up to a total of 750mm high if required.

**Britstream BE -extract only & DWE DishWash/condensate**

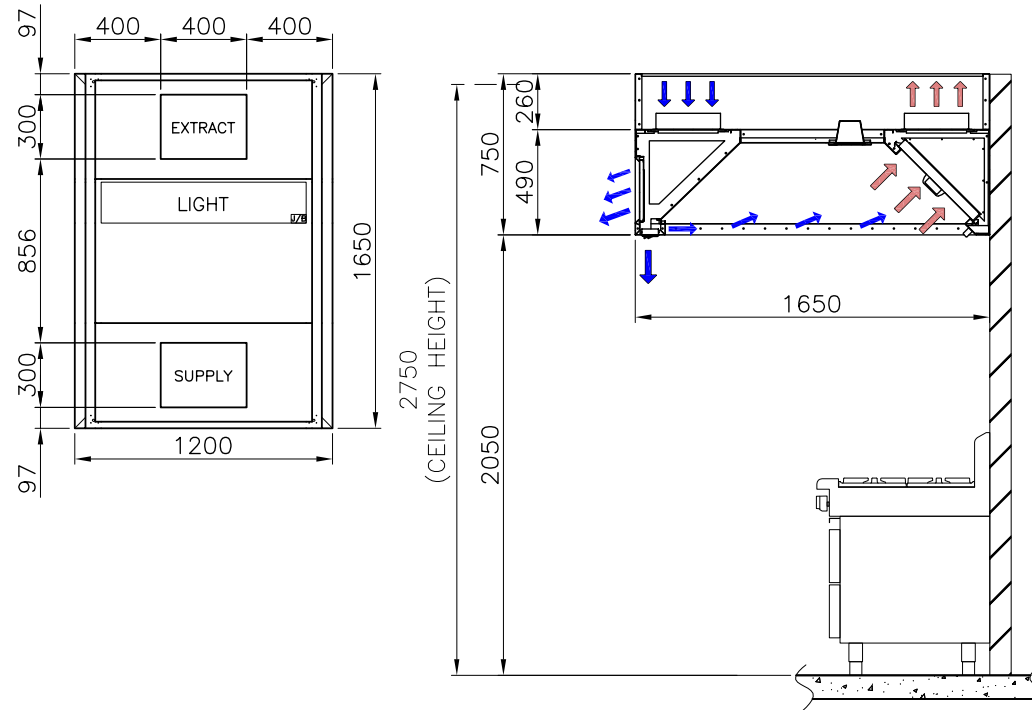
SINGLE SIDED/ WALL TYPE - ALL 1650 WIDE								
Model number	Length	No. Filters	* Max Extract Volume L/s	No. of Extract Spigots	Max Supply Volume L/s	No. of Supply Spigots	No. of Lights	No. of Zones
BE-12001650	1200	3	660	1	0	0	1	1
BE-13751650	1375	3	840	1	0	0	1	1
BE-15501650	1550	4	880	1	0	0	1	1
BE-17251650	1725	4	880	1	0	0	1	1
BE-19001650	1900	5	1100	1	0	0	1	1
BE-20751650	2075	5	1100	1	0	0	1	1
BE-22501650	2250	6	1320	1	0	0	1	1
BE-24251650	2425	6	1320	1	0	0	1	1
BE-26001650	2650	7	1540	2	0	0	2	2
BE-28251650	2825	7	1540	2	0	0	2	2
BE-30001650	3000	8	1760	2	0	0	2	2
BE-31751650	3175	8	1760	2	0	0	2	2
BE-33501650	3350	9	1980	2	0	0	2	2
BE-35251650	3525	9	1980	2	0	0	2	2
BE-37001650	3700	10	2200	2	0	0	2	2
BE-38751650	3875	10	2200	2	0	0	2	2
BE-40501650	4050	11	2420	2	0	0	2	2
BE-42251650	4225	11	2420	2	0	0	2	2
BE-44001650	4400	12	2640	2	0	0	2	2
BE-45751650	4575	12	2640	2	0	0	2	2
BE-48001650	4800	13	2860	3	0	0	3	3
BE-49751650	4975	13	2860	3	0	0	3	3
BE-51501650	5150	14	3080	3	0	0	3	3
BE-53251650	5325	14	3080	3	0	0	3	3
BE-55001650	5500	15	3300	3	0	0	3	3
BE-56751650	5675	15	3300	3	0	0	3	3
BE-58501650	5850	16	3520	3	0	0	3	3
BE-60251650	6025	16	3520	3	0	0	3	3
BE-62001650	6200	17	3740	3	0	0	3	3
BE-63751650	6375	17	3740	3	0	0	3	3
BE-65501650	6550	18	3960	3	0	0	3	3
BE-67251650	6725	18	3960	3	0	0	3	3

DOUBLE SIDED/ISLAND TYPE - ALL 3300 WIDE								
Model number	Length	No. Filters	* Max Extract Volume L/s	No. of Extract Spigots	* Max Supply Volume L/s	No. of Supply Spigots	No. of Lights	No. of Zones
BEI-12003300	1200	6	1320	2	0	0	2	2
BEI-13753300	1375	6	1320	2	0	0	2	2
BEI-15503300	1550	8	1760	2	0	0	2	2
BEI-17253300	1725	8	1760	2	0	0	2	2
BEI-19003300	1900	10	2200	2	0	0	2	2
BEI-20753300	2075	10	2200	2	0	0	2	2
BEI-22503300	2250	12	2640	2	0	0	2	2
BEI-24253300	2425	12	2640	2	0	0	2	2
BEI-26503300	2650	14	3080	4	0	0	4	4
BEI-28253300	2825	14	3080	4	0	0	4	4
BEI-30003300	3000	16	3520	4	0	0	4	4
BEI-31753300	3175	16	3520	4	0	0	4	4
BEI-33503300	3350	18	3960	4	0	0	4	4
BEI-35253300	3525	18	3960	4	0	0	4	4
BEI-37003300	3700	20	4400	4	0	0	4	4
BEI-38753300	3875	20	4400	4	0	0	4	4
BEI-40503300	4050	22	4840	4	0	0	4	4
BEI-42253300	4225	22	4840	4	0	0	4	4
BEI-44003300	4400	24	5280	4	0	0	4	4
BEI-45753300	4575	24	5280	4	0	0	4	4
BEI-48003300	4800	26	5720	6	0	0	6	6
BEI-49753300	4975	26	5720	6	0	0	6	6
BEI-51503300	5150	28	6160	6	0	0	6	6
BEI-53253300	5325	28	6160	6	0	0	6	6
BEI-55003300	5500	30	6600	6	0	0	6	6
BEI-56753300	5675	30	6600	6	0	0	6	6
BEI-58503300	5850	32	7040	6	0	0	6	6
BEI-60253300	6025	32	7040	6	0	0	6	6
BEI-62003300	6200	34	7480	6	0	0	6	6
BEI-63753300	6375	34	7480	6	0	0	6	6
BEI-65503300	6550	36	7920	6	0	0	6	6
BEI-67253300	6725	36	7920	6	0	0	6	6

\*Note: This is the Maximum Extract Volume L/s quoted for each canopy size, specific air flow data will be supplied on request.

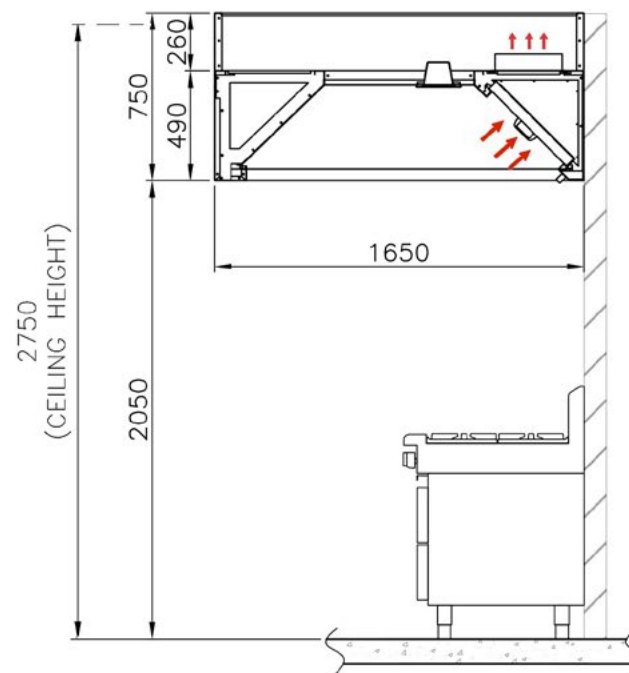
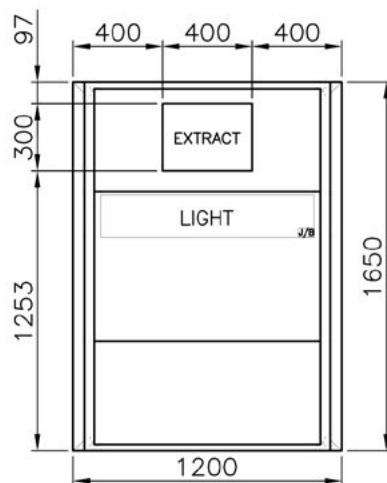
DISHWASH								
DWE-13001300	1300mm	NA	400	1	NA	NA	NA	1

**Capturestream CS3 1200 x 1650 - Standard Drawing**

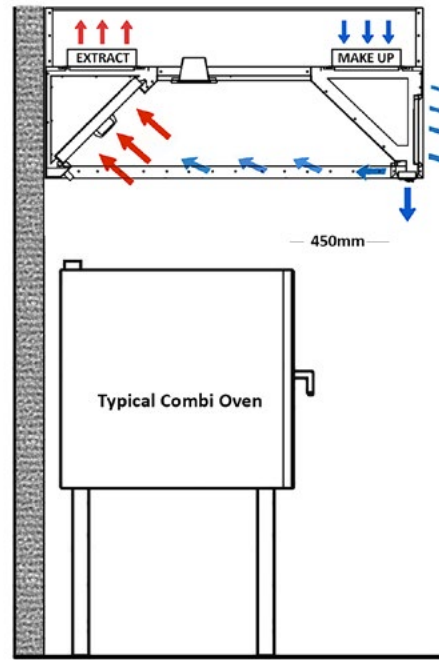


APPROVED BY: \_\_\_\_\_  
 SIGNATURE: \_\_\_\_\_  
 COMPANY NAME: \_\_\_\_\_  
 DATE: \_\_\_\_\_

**Britstream BE 1200 x 1650 - Standard Drawing**



APPROVED BY: \_\_\_\_\_  
 SIGNATURE: \_\_\_\_\_  
 COMPANY NAME: \_\_\_\_\_  
 DATE: \_\_\_\_\_



Schematic of typical Combi Oven installation using **CS3 Capturestream 1650mm** deep canopy to conform with AS 1668.2 - 2012

Britannia canopies are proudly manufactured in Australia under licence from Britannia UK



**Britannia Kitchen Ventilation**

A business unit of FSM [Food Service Machinery] P/L

HEAD OFFICE: Unit E6, 63-85 Turner Street, Port Melbourne, Victoria 3207, Australia

Tel: (03) 8645 2555 F: (03) 8645 2565 E: sales@fsm-pl.com.au W: www.fsm-pl.com.au

NSW & QLD OFFICE: Unit 15, 7-9 Progress Circuit, Prestons, NSW 2170

Tel: (02) 9608 8620 F: (02) 9607 9370