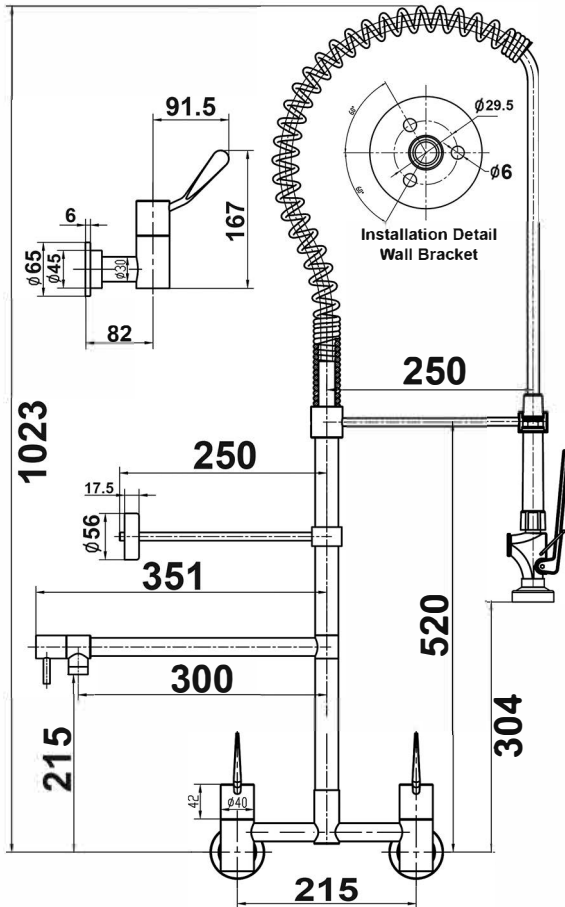
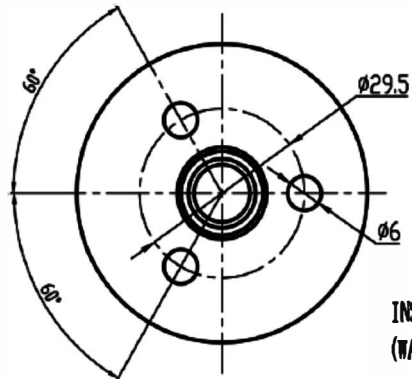


Technical Drawings



Cutouts: Taps: 22mm



INSTALLATION DETAIL
(WALL BRACKET CUTOUT)

PRODUCT WARRANTY/SERVICING

Our Products come with guarantees that cannot be excluded under the Australian Consumer Law.

The warranty is extended to the purchaser only and is not transferable.

Misuse is not covered by Warranty · All mixers should be installed with isolating stop valves.

Use only suitable agents to clean the surface of your mixer (ie. No abrasive cleaners)

The mixer must be installed by a licensed plumber, All new connections must be flushed prior to the connection.

If the incoming water pressure exceeds 500KPa, an approved limiting valve must be installed.

- Approved operating temperature is not to exceed 80 C
- Minimum Operating Pressure 150KPa.
- Maximum Pressure: 350k pa
- Optimum working pressure is 350kPa.
- Minimum Temperature: 10degC
- Maximum Temperature: 80degC
- Hose must not be bent during use.

IMPORTANT NOTE: We do not recommend dismantling the internal parts of the mixer. The mixers are individually factory assembled and tested to give the best performance.

NOTE: THE MIXER CAN ONLY BE USED ON MAIN PRESSURE SYSTEMS.



Standard/Compliances

Tested to AS/NZS3718, AS4020 and AS/NZS6400

Installation Guide

FSM - AQW1500

WALL MOUNT PRE-RINSE

Congratulations for purchasing this quality Tap. This Commercial high-end pre-rinse unit is already factory assembled and designed for easy installation and



For all After Sales Service or assistance contact:



(03) 9368 2300
www.fsm-pl.com.au

Please follow these instructions:

1. For hot and cold water supplies, Secure the two 1/2" BSP male fittings behind the finished wall 220mm apart.

2. Flush the line thoroughly before connecting the concentric wall bases (13) for the tap fittings. Once the line is clear of debris, proceed to next step.

3. Add thread sealing tape onto the two 1/2" male threads on wall. Check the the two flanges(14) and the o-rings(16&5). Place the flanges in each of the threads before screwing the concentric wall base.

4. Screw each of the concentric wall bases (13) into the 1/2" male threads, firmly until fits.

5. Gently but firmly push the frame (6) onto the wall bases (13), making sure the o-rings(12) are not pinched or damaged in the process.

6. To Secure the fitting screwing the 2 small screws (7) under each side of the inlet with the Allen key provided (8).

7. Fit riser and/or pot filler adaptor onto the base body. Initially, align the joints straight, then gently but firmly push the male double o-ring spigot fitting (13) into the female connection, watch not damage the o-rings while doing so. Push the joints together all the way until the male joint comes to a stop.

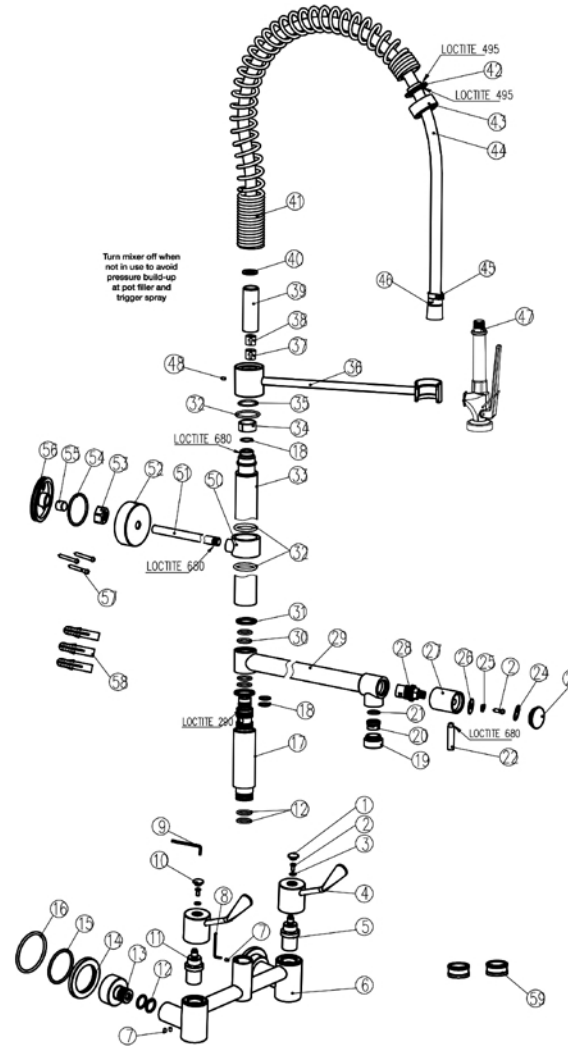
8. Then fit the main riser assembly(17) into the body by pushing the Twin O ring Spigot(12) downward.

Note: the wall support Bar (24)(25) should be installed as high as possible. This wall support bar should be cut to fit the desired distance to the wall.

9. Ensuring the Riser is 90 degrees to the wall measure and cut the wall support bar to a length with a 2 to 5mm gap from the wall.

10. Fit the O ring (54) to the Groove on the fixing wall plate (56)

11. Slide on the Chrome Cover Flange (52), Nut (53), Brass Olive (55) & wall fixing Plate (56) onto the wall support Bar (51) as shown on the Part Break Up Drawing.



Note: The Mi thread on the end of the end of the Trigger Spray hose swivels, so you do not have to spin the whole hose around when connecting the Hose to the Riser Assembly.

- For SS Splash Back and or Cool Room Panel Wall ensure fixing method (by others) results in a solid fixing.
- For a masonry wall use the wall anchors provided (58) with Screws (57)
- For a Timber backed wall Use the Screws Provided (57)

12. Swing the Wall Support Bar into position and mark the three holes for drilling into the wall.

13. Swing the Wall Support Bar to the left or right to enable the three holes to be drilled.

14. Swing the Wall Support Bracket back into position, line up the holes in (56) and screw the there given screws (57) (58) fixing plate back to the wall, Tighten the Brass Nut and Olive ensuring a firm and solid installation, slide the Chrome Cover Plate over the Wall Plate.

16. Slide the spring (41) return back to expose the MI Brass connecting thread (45).

17. Screw the Brass MI end of the Flexible Hose into the top of the Riser Assembly, do up firmly but do not over tighten - Support the weight of the hose and spring while tightening to prevent cross threading and kinking of the hose.

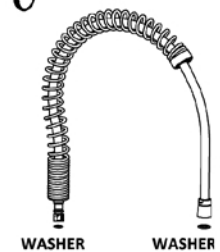
18. Slide the spring back over the end of the hose until it sits on top of the Riser Assembly.

18. Screw the Trigger Spray Unit (47) to the Flexible Hose, tighten firmly using a spanner on the flat section of the CP Loose Nut. Turn on the Water and test the unit.

Pot filler assembly



Hose assembly



Wall bracket

