

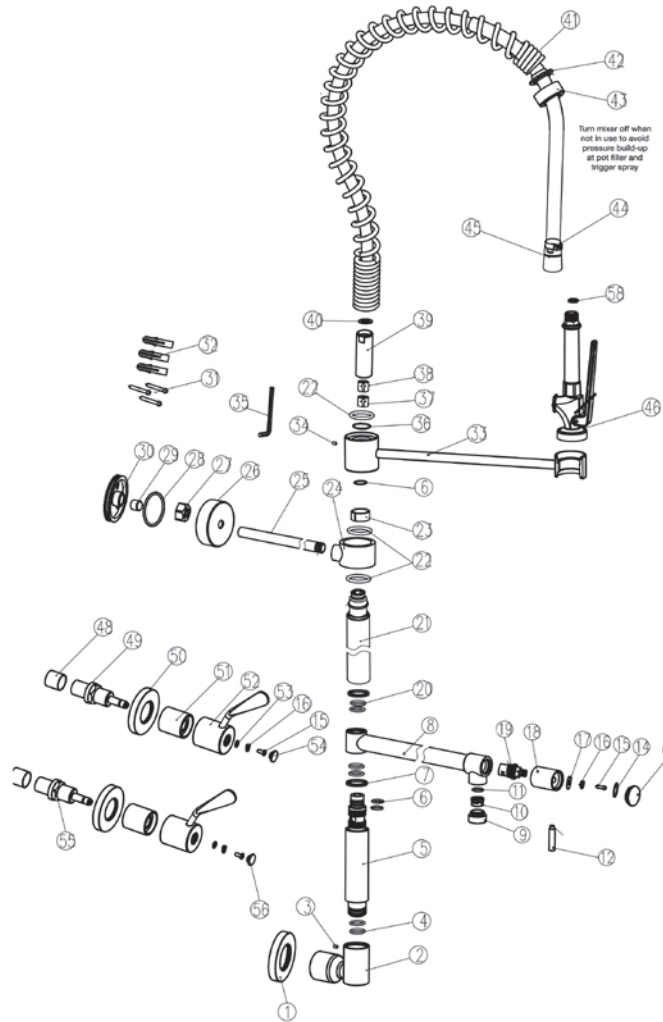
Please follow these instructions:

Wall Handles Installation:

1. Unscrew the cover flange (48) from the main body of the spindle(49). Also, unscrew the locket from the spindle (49).
2. Screw the spindle body into the recess body using the handle (52) to make sure the spindle is touching the body.
3. Push back the finer washer and screw the fibre washer, and screw the locket. Tight firmly. Push in the cover flange to touch the wall.
4. Screw the spindle flange (51) into the locket. Screw the handles (52) in the desired position with the provided Allen key(35) and screws(15) cover the screws with the provided plastic guide(54) for the (hot/cold).

Pre-rinse arm and pot filler installation:

5. Secure the 1/2" BSP male fitting behind the finished wall 220mm apart.
6. Flush the line thoroughly before connecting tap fittings. Once the line is clear of debris, place the Flange(50)
7. Screw the wall base arm (2) into the 1/2"thread until the unit is tight. Make sure the wall base is fitted plumb facing up.
8. Push the pre rise body into the wall base arm. Tale care with the ring and make sure clicks and ist firm.
- Note: the wall support Bar (24)(25) should be installed as high as possible. This wall support bar should be cut to fit the desired distance to the wall.
9. Ensuring the Riser is 90 degrees to the wall measure and cut the wall support bar to a length with a 2 to 5mm gap from the wall.
10. Fit the O ring (28) to the Groove on the fixing wall plate (30).
11. Slide on the Chrome Cover Flange (26), Nut (27), Brass Olive (29) & wall fixing Plate (30) onto the wall support Bar (25) as shown on the Part Break Up Drawing.



- For a masonry wall use the wall anchors(32) provided with Screws (34).
- For a Timber backed wall Use the Screws Provided (34).
- For SS Splash Back and or Cool Room Panel Wall ensure fixing method (by others) results in a solid fixing.

Note: The Mi thread on the end of the end of the Trigger Spray hose swivels, so you do not have to spin the whole hose around when connecting the Hose to the Riser Assembly.

11.Swing the wall support bar (34) into position and mark the three holes for drilling into the wall (39) .

12.Swing the wall support bar to the left or right to enable the three holes to be drilled.

13 .Swing the Wall Support Bracket back into position, line up the holes in (30) and screw the there given screws (31) (32) fixing plate back to the wall, Tighten the Brass Nut and Olive ensuring a firm and solid installation, slide the Chrome Cover(26) Plate over the Wall Plate (30).

14. Fit the flat washer (40) into the top of the Riser Assembly to ensure a water tight seal.

15. Slide the spring (41) return back to expose the MI Brass connecting thread (45).

16. Screw the MI Brass end of the Flexible Hose into the top of the Riser Assembly, do up firmly but do not over tighten - Support the weight of the hose and spring while tightening to prevent cross threading and kinking of the hose.

16. Slide the spring back over the end of the hose until it sits on top of the Riser Assembly.

17. Fit washer (58) to the other end of the Flexible Hose

18. Screw the Trigger Spray Unit (46) to the Flexible Hose, tighten firmly using a spanner on the flat section of the CP Loose Nut. Turn on the Water and test the unit.

Pot filler assembly



Hose assembly



Wall bracket

