



MASTER SERIES

DMX 300 CC

Ref : MX160



DESCRIPTION

- Micro safety switch with rubber protection against humidity.
- Continuous operation micro switch: allows operation independent of the mixer
- Ergonomic shape that facilitates handling and cleaning.
- High ventilation better engine cooling.
- Power-on indicator light for user safety.
- Diving tube and bell in food grade stainless steel for easy maintenance and the lifespan of the whole.
- Metal knife easy to disassemble
- tube and bell completely removable without tools, which ensure better safety and easy cleaning, avoiding any splashing of water on the parts electrical

UTILISATION

Specially designed for low height and large capacity container

Directly in the pot, it sprays in a few minutes, 40 to 100 liters of cooked vegetables including leek, onions, etc...

Ideal for making excellent velvety soups, fish soups, panades, brunoises, mousselines, chopped cabbage and spinach, pancake batter, sauces, mayonnaises, cod brandades, finely pulverized vegetable purees, porridges, fruit creams, etc.

Capacity : 40 to 100 Litres



TECHNICAL CHARACTERISTIC	
POWER	600 W
REVOLUTION PER MINUTE	3000 to 10500 rpm
TENSION	110-120 V ou 220-240 V
TOTAL LENGTH	628 mm
TUBE LENGTH	300 mm
DEVICE DIAMETER	122 mm
NET WEIGHT	3,7 kg

MAINTENANCE TIPS

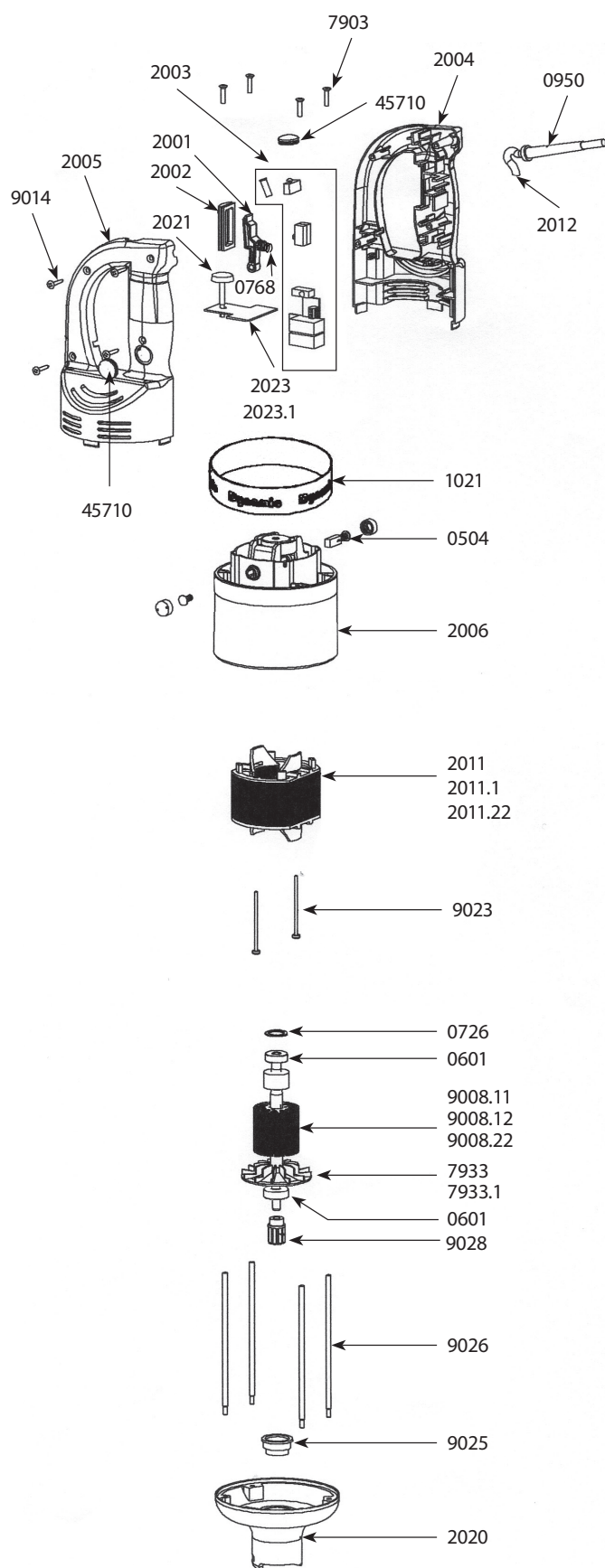
Rinse the bottom of the foot under water. Watch out for splashes which could enter through the engine ventilation slots and irreparably damage it.

Do not wash with water jet or dishwasher.

For more efficiency when cleaning, immerse the blender foot in a container containing water and turn the appliance on for a few seconds.

Clean the handle with a sponge or damp cloth.

EXPLODED VIEW



Part List

Code

Charcoals with caps (pair)	0504
Rolling	0601
Spring washer	0726
Safety spring	0768
Grommet	0950
Grommet for 115 V cord	0950.1
Filtered C.E.M.	0999.20
Safety label - Caution	1017
Decor Strio "Dynamic"	1021
Etiquette d'identification 230 V	1075
Etiquette d'identification 115 V	1076
Switch (mini switch IW2)	1237
Power indicator 230 V	1241
Power indicator 115 V	1241.1
Control lever	2001
Control lever protection	2002
Control circuit 230 V (+ 4 switches + capacitor)	2003
Control circuit 115 V (+ 4 switches + capacitor)	2003.1
Top half handle	2004
Lower half handle	2005
Upper casing (equipped with carbon holders)	2006
Variator cap	2008
Complete 230 V handle (cord, indicator light, plugs, circuit and control lever)	2010
Complete 115 V handle (cord, indicator light, plugs, circuit and control lever)	2010.1
230 V mass (housing equipped with carbon holders)	2011
Ground 115 V (housing equipped with carbon holders)	2011.1
Mass from n° 17/00001	2011.22
2-wire power cord + 230 V terminals after 2002	2012
2-wire power cord + 115 V terminals after 2002	2012.1
UK cord + terminals after 2002	2012.2
Australian cord + terminals after 2002	2012.3
Lower aluminum housing (equipped with a pin + bearing ring)	2020
Dimmer dial	2021
Complete 230 V handle with dimmer (from No. 040132)	2022
Complete 115 V handle with dimmer (from N°040132)	2022.1
230 V dimmer	2023
115 V dimmer	2023.1
Tie rod screws (4)	7903
Turbine	7933
Turbine from n° 17/00001	7933.1
115 V armature without coupling hub	9008.11
Induced 230 V without coupling hub	9008.12
Induced from n° 17/00001	9008.22
2-wire 230 V power cord before 2002	9011
Handle screws (4)	9014
Ground fixing screws (2)	9023
Bearing ring	9025
Ties (4)	9026
Coupling hub	9028
2-wire 115V power cord before 2002	9040
EElectric wire for 230 V charcoal holders (2)	9043
Australian cord before 2002	9066
Electrical wire for 115 V charcoal holders (2)	9143
Protective cap (unit)	45710

EXPLODED VIEW

DM X300 CC MASTER - Réf MX160 (Complete foot)

Parts list Code

Rolling	0601
Self-lubricating bushing	0603
Watertight ring	0607
O-ring	0610PD
Pin 3x20	0744
Clip de couteau M90HC	0839H
M90HC knife clip	1432
Spacer with end cap and socket	1461
M300 CC foot shaft	1464
M90 HC foot knife	7917H
Coupling cage	9051
M410HC foot removal too	119962
Black tip	9847M90

