

C Series Counter Mount dispensers come with adjustable collars to accommodate a specific range of cup sizes. Durable 26 gauge stainless steel construction gives exceptional long term performance, and the dispensers are available in Vertical, Horizontal or Foam cup models to suit demanding installations.

Many busy fast food outlets enjoy the reliability and good looks of these models.

### C3200 SERIES

FOR CUP RIM DIAMETERS **58-80mm** Tube length 597mm, Counter hole dia. 106mm)

CODE	MOUNT	CUP TYPE	APPROX. CUP SIZE
C3200CV	Vertical or 45°	Paper/plastic	177-300ml
C3200CH	Horizontal	Paper/plastic	177-300ml
C3200CF	All	Foam	177-300ml



### C3400 SERIES

FOR CUP RIM DIAMETERS **70-98MM** Tube length 597mm, Counter hole dia. 119mm)

CODE	MOUNT	CUP TYPE	APPROX. CUP SIZE
C3400CV	Vertical or 45°	Paper/plastic	350-710ml
C3400CH	Horizontal	Paper/plastic	350-710ml
C3400CF	All	Foam	350-710ml



### C3500 SERIES

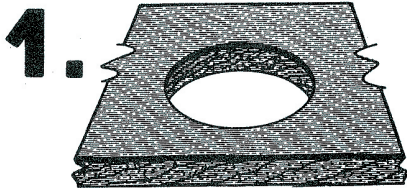
FOR CUP RIM DIAMETERS **101-123MM**  
Tube length 597mm, Counter hole dia. 146mm)

CODE	MOUNT	CUP TYPE	APPROX. CUP SIZE
C3500CV	Vertical or 45°	paper/plastic	950-1360ml
C3500CH	Horizontal	paper/plastic	950-1360ml
C3500CF	All	Foam	950-1360ml

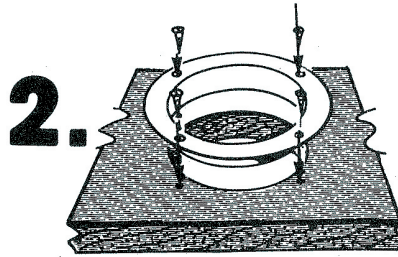


## C SERIES INSTRUCTIONS

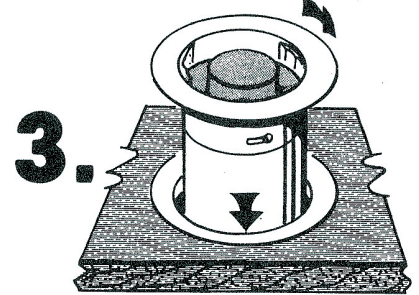
### INSTALLATION



Cut hole size for desired dispenser. To determine proper hole diameter refer to specifications.



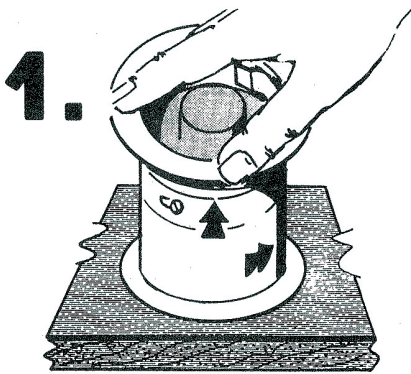
Fasten mounting ring securely over hole with the supplied mounting hardware.



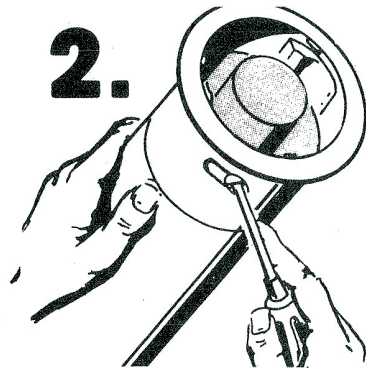
Place dispenser into hole. Align ear tabs on dispenser to openings on mounting ring. Rotate dispenser one quarter turn clockwise to secure to counter.

**NOTE:** This unit is self supported by mounting ring. No additional support is needed when mounting in a horizontal position.

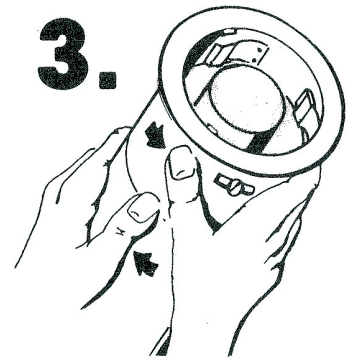
### ADJUSTMENT



Remove dispenser from counter by rotating counterclockwise and pulling from hole.



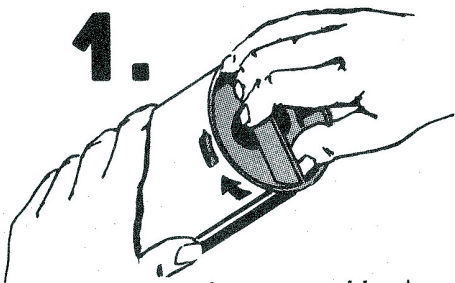
Loosen locking screw, and load cups into dispenser.



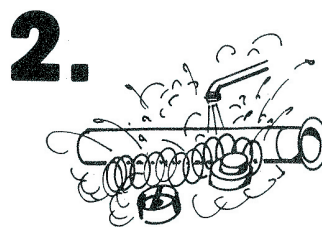
Turn collar counterclockwise until adjustment clips hold cups firmly in place. Tighten locking screw. **DO NOT BEND CLIPS BY HAND!**

**NOTE:** For proper operation, cups should dispense from middle of adjustment clips.

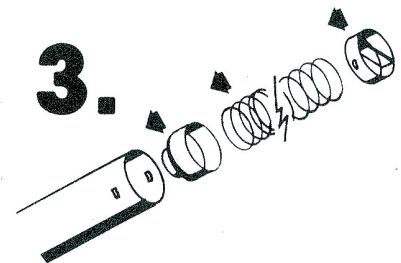
### MAINTENANCE



Remove spring assembly by rotating plastic base clockwise until tabs are released from window. Pull bottom out carefully.



Remove spring and cup holder., Wash all parts with warm soapy water to remove dirt and wax build up. Do not bend the adjustment clips by hand.



Reassemble unit by inserting cup holder, spring and bottom, making sure tabs snap into windows. Be sure to check adjustment before reinstalling.