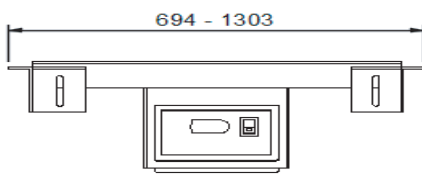
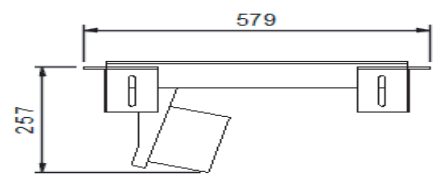
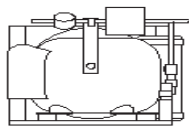


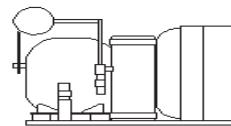
TOP VIEW



FRONT VIEW  
NTS



SIDE VIEW



## STANDARD FEATURES

- Mounts directly to underside of appropriate countertop material
- Approved materials include granite and quartz up to (30 mm), Swanstone (provided by Hatco), and certain stainless steel or aluminum surfaces approved by Hatco. Please contact the factory for applications with other material
- CSU units have unattached Condenser, attached Control Box
- CSU(R) condensers utilize R-513A refrigerant
- Condensing unit features easy serviceability with sight glass, service valves, dryer/filter and receiver
- CSU models offer a long, flexible, refrigerant line which allows condensing unit to be pulled out for service
- With CSU models, condensing unit may be mounted up to 219 mm away from the center of shelf
- All units have an Electronic Temperature Control Box with a 1219 mm lead wire
- Control Box can be mounted 1219 mm from center of the shelf

Hatco's Cold Shelves Undermount are designed to keep your products in the perfect chill zone. Undermount shelves have the amazing benefit of being able to be installed under the counter top of your choice!

## SPECIFICATIONS

Model	Dimension (WxDxH)	Ship Weight	Voltage	Watts	Amps	Plug
CSUP-24-I	697 x 579 x 257mm	52kg	120	1296	5.4	NEMA 5-15P
CSUP-36-I	998 x 579 x 257mm	64kg	120	984	4.1	NEMA 5-15P
CSUP-48-I	1303 x 579 x 257mm	70kg	120	984	4.1	NEMA 5-15P